

How is geospatial transforming Water Authorities?

In 2019 and 2022, we conducted the National Water Industry GIS Survey and asked authority representatives about their approach to geospatial and how they are using technology to enhance their operations. Below is a snapshot of our findings.

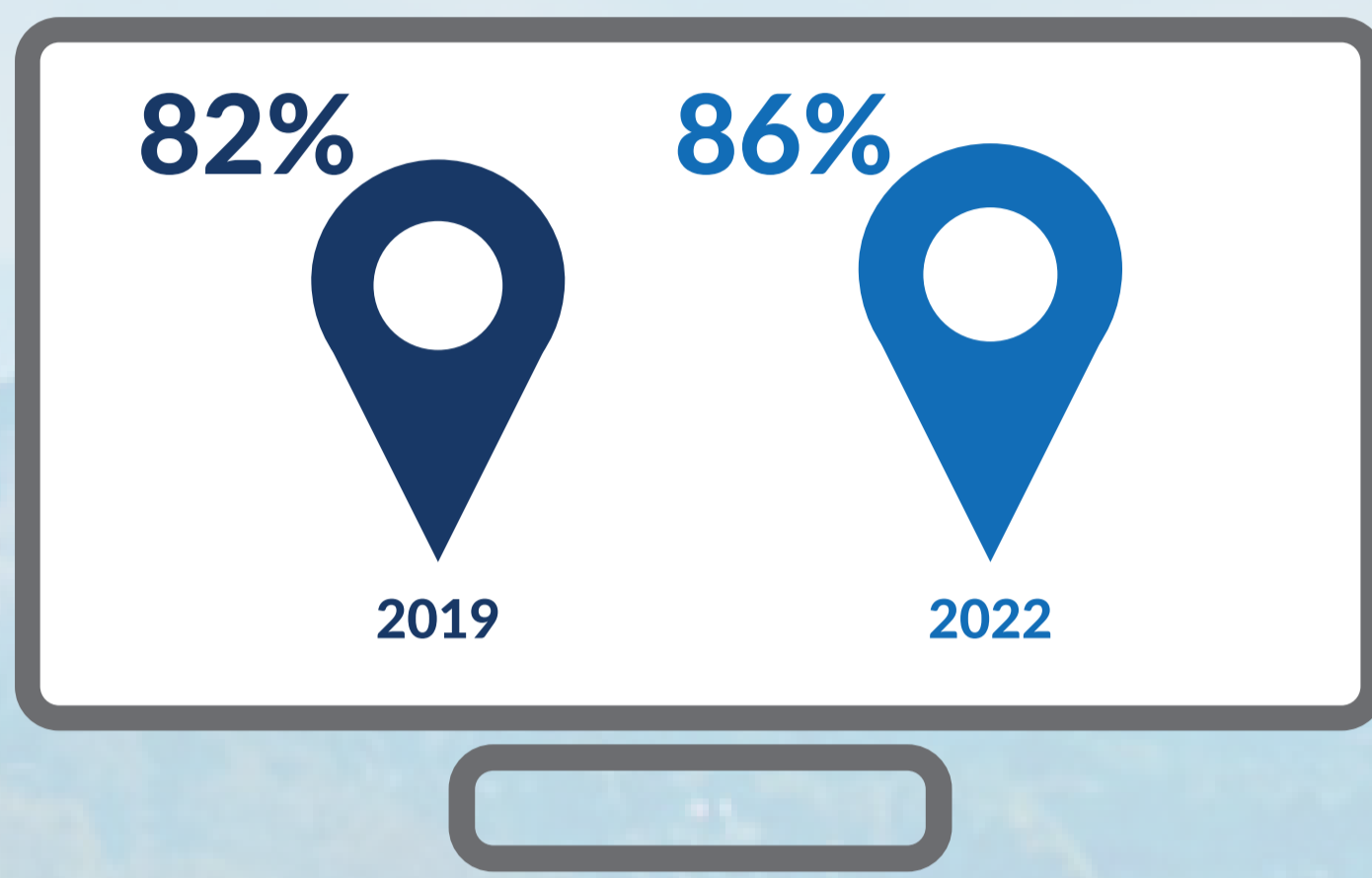


MODERN GIS

How mature is access to authority maps and data?

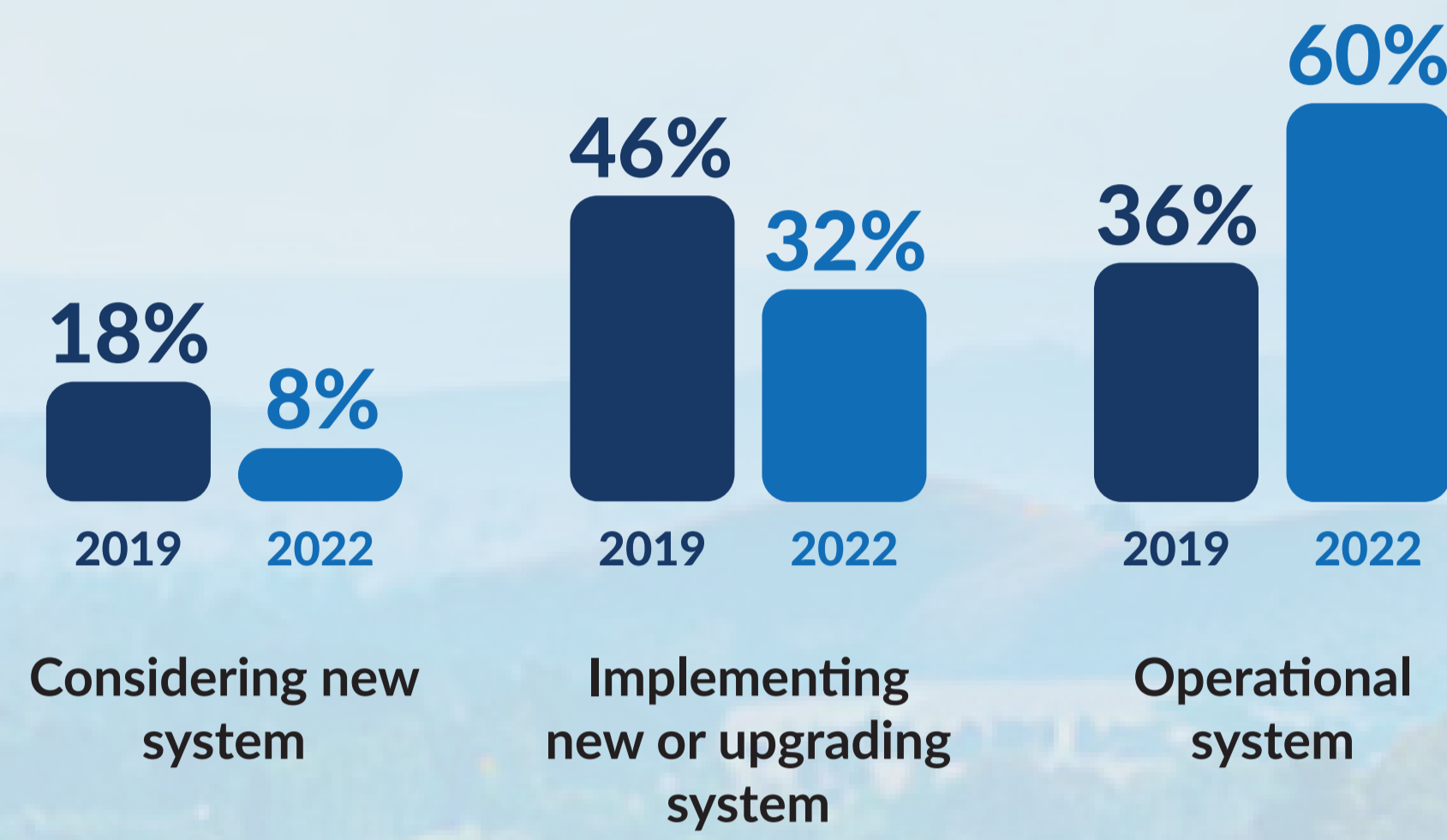
Corporate web GIS implementation

Providing staff with a web-based GIS is a core application for the majority of authorities



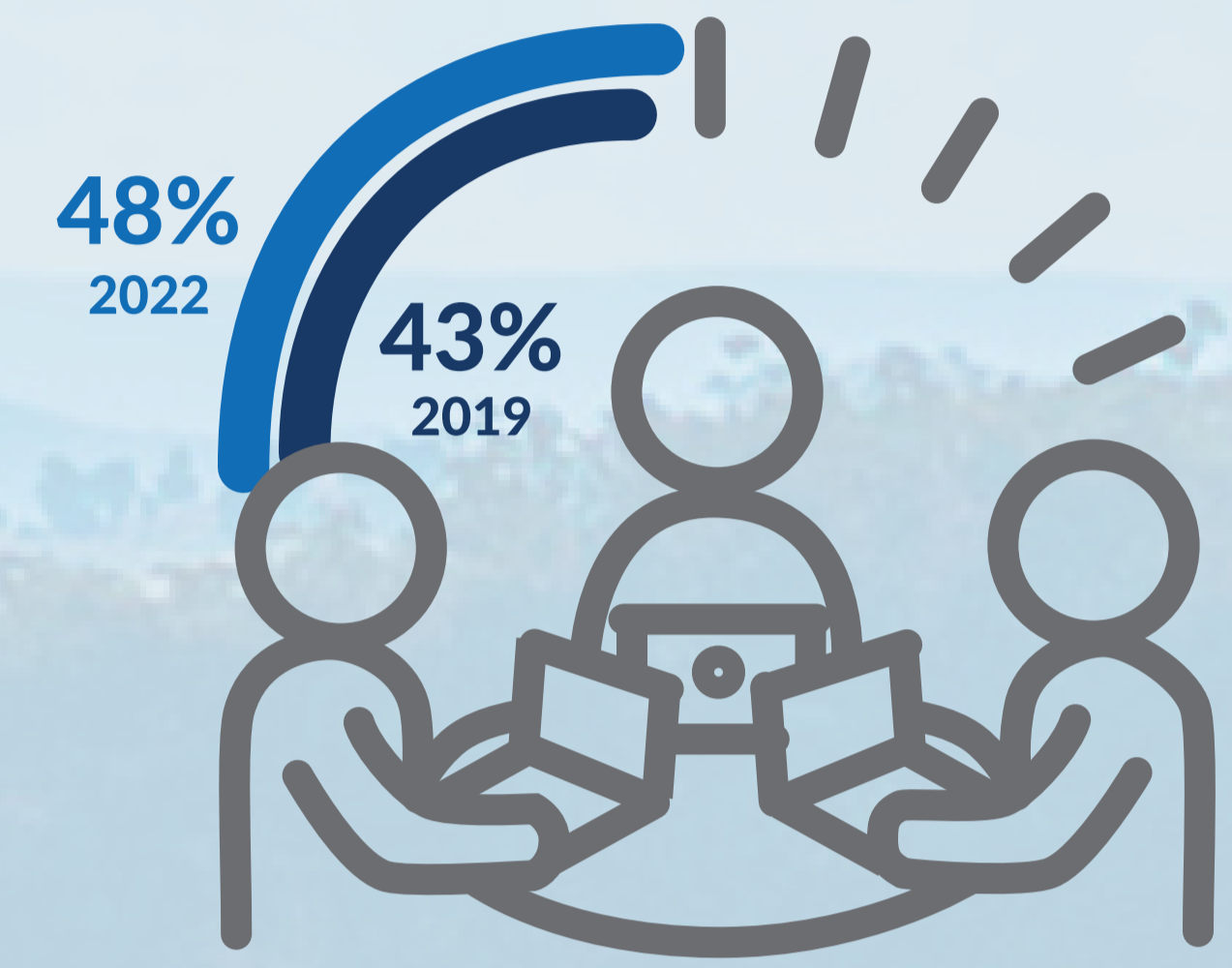
Lifecycle stage of corporate GIS

Over a third of authorities are modernising their corporate GIS



% of staff who are regular users of GIS

For a typical water authority, all staff have access and nearly half are regular users of GIS

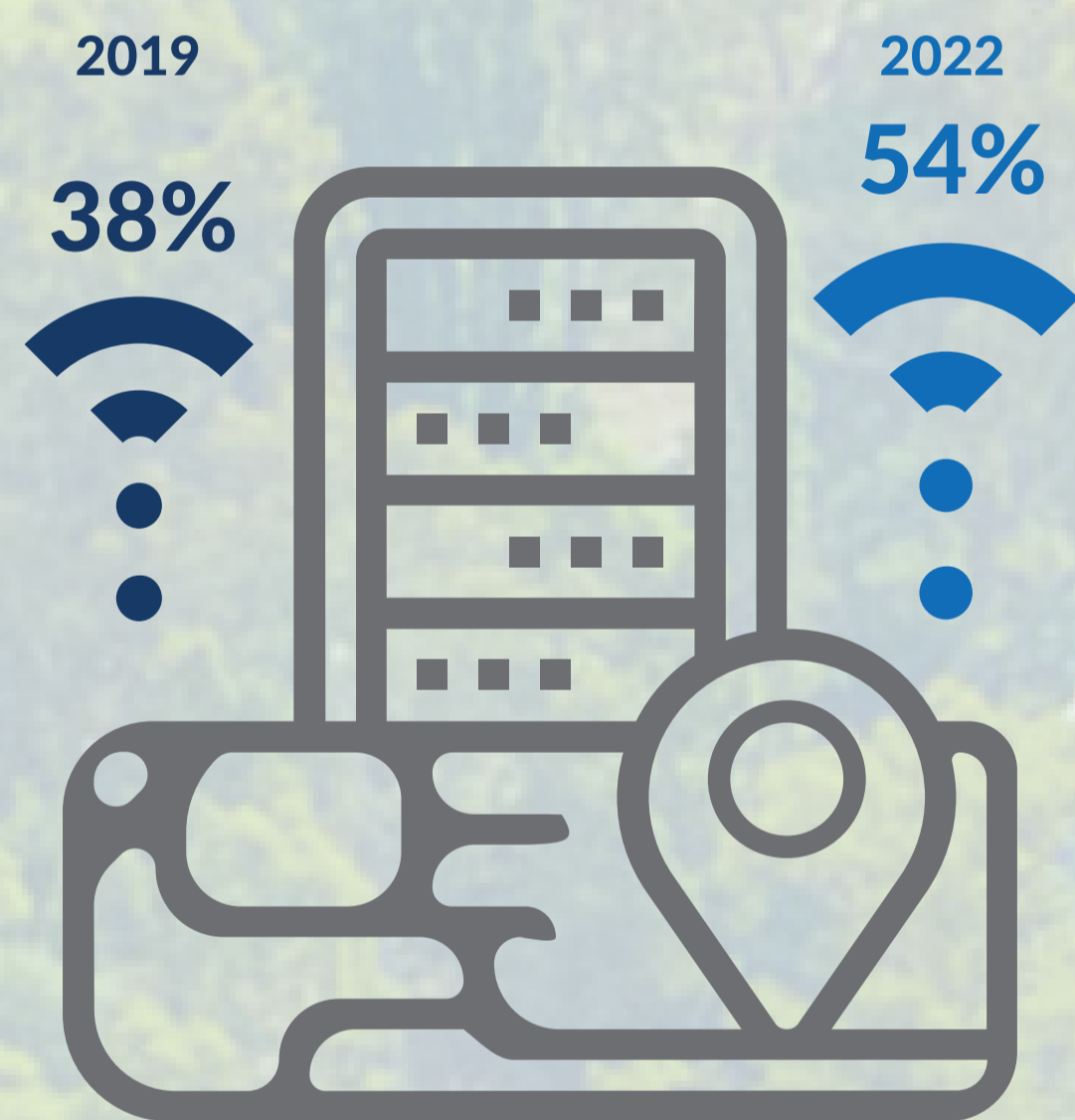


DYNAMIC GEOSPATIAL TECH

What improvements and operational efficiencies are being implemented?

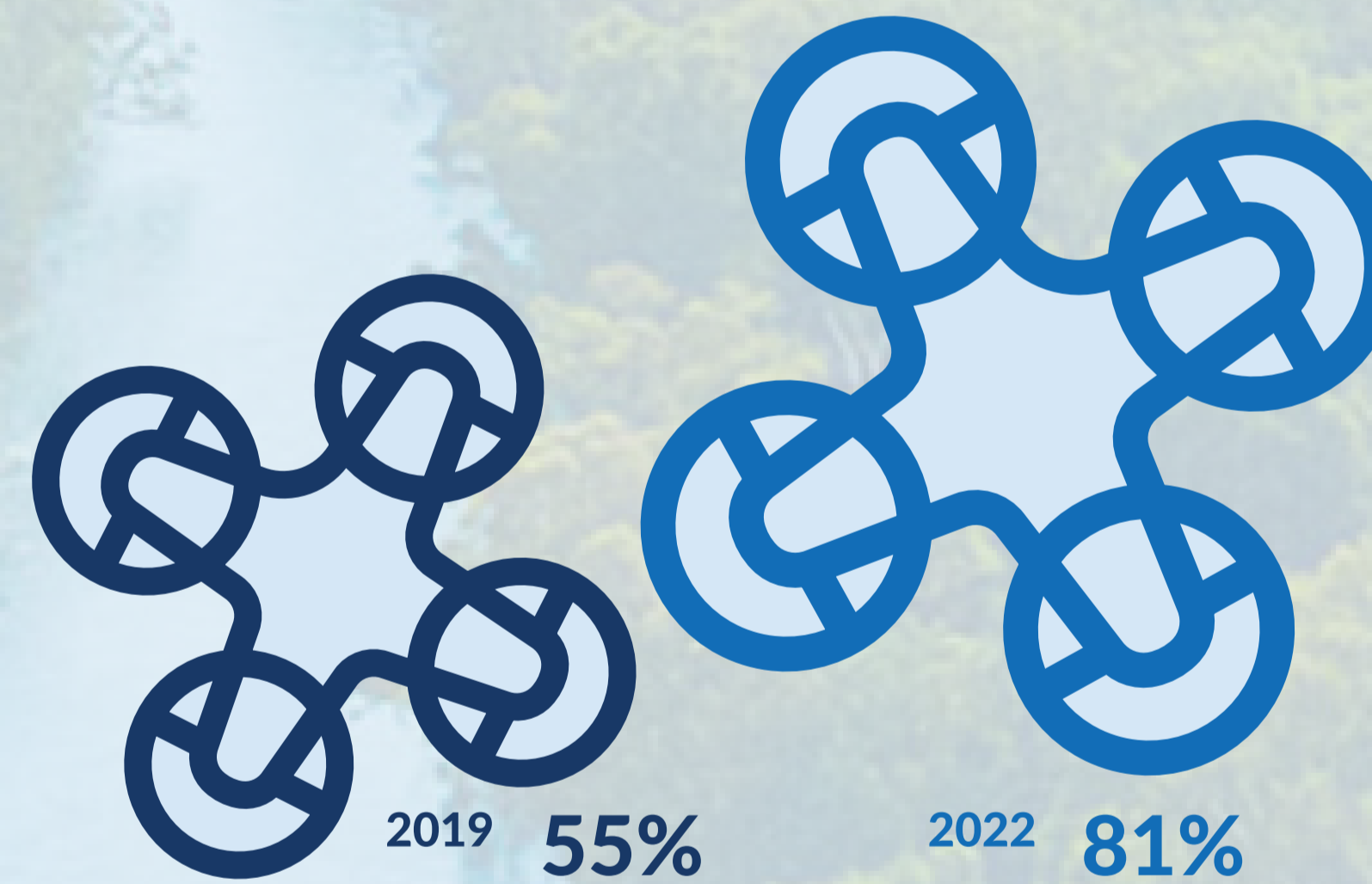
Field access

Geospatial field apps have been rolled out in about half of authorities - providing anytime, anywhere access for users



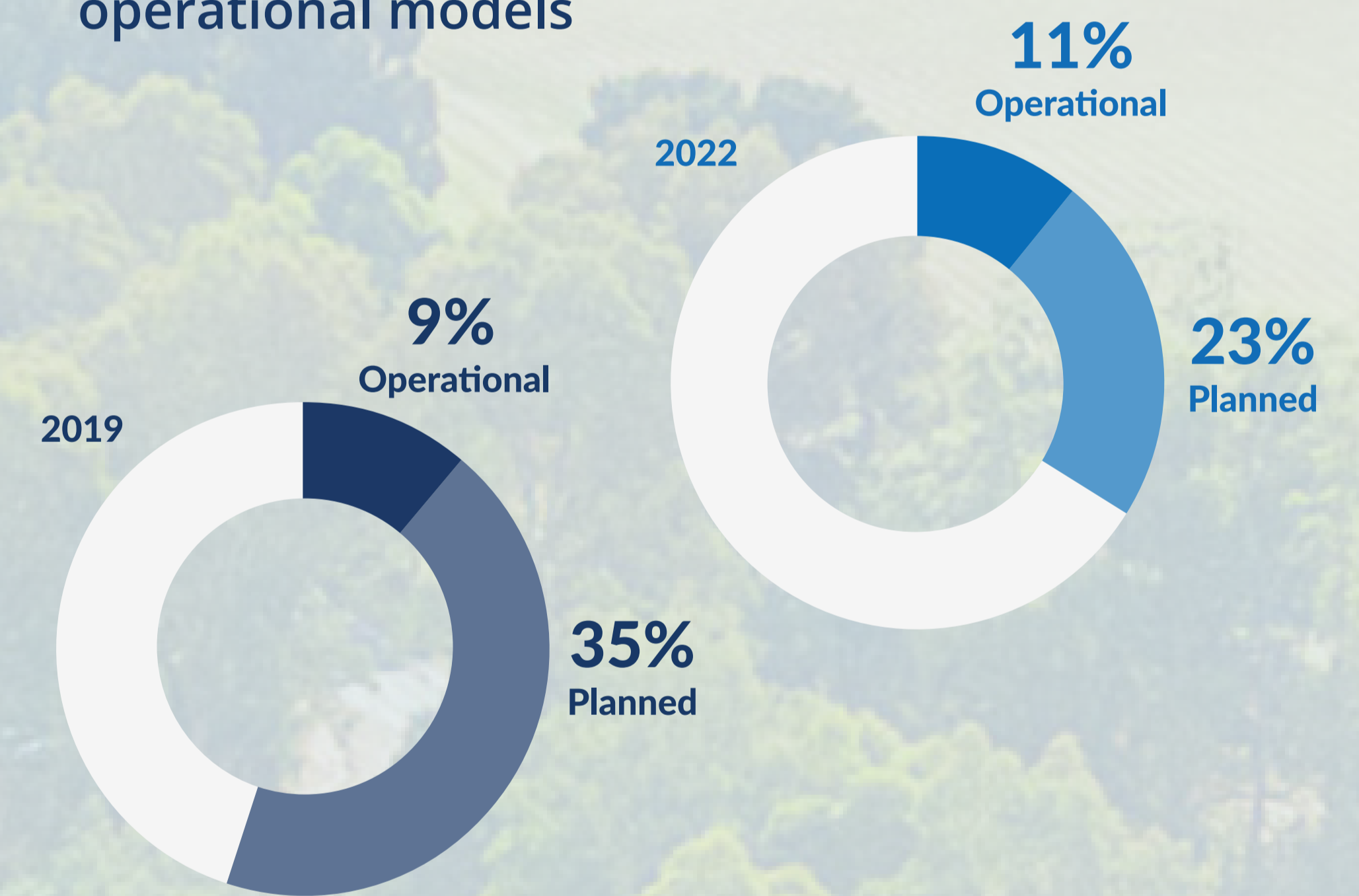
Use of drones

Over 80% of authorities were utilising drones (UAVs, RPAs)



Real-time monitoring (water operations)

However, there are challenges when it comes to implementing live operational models

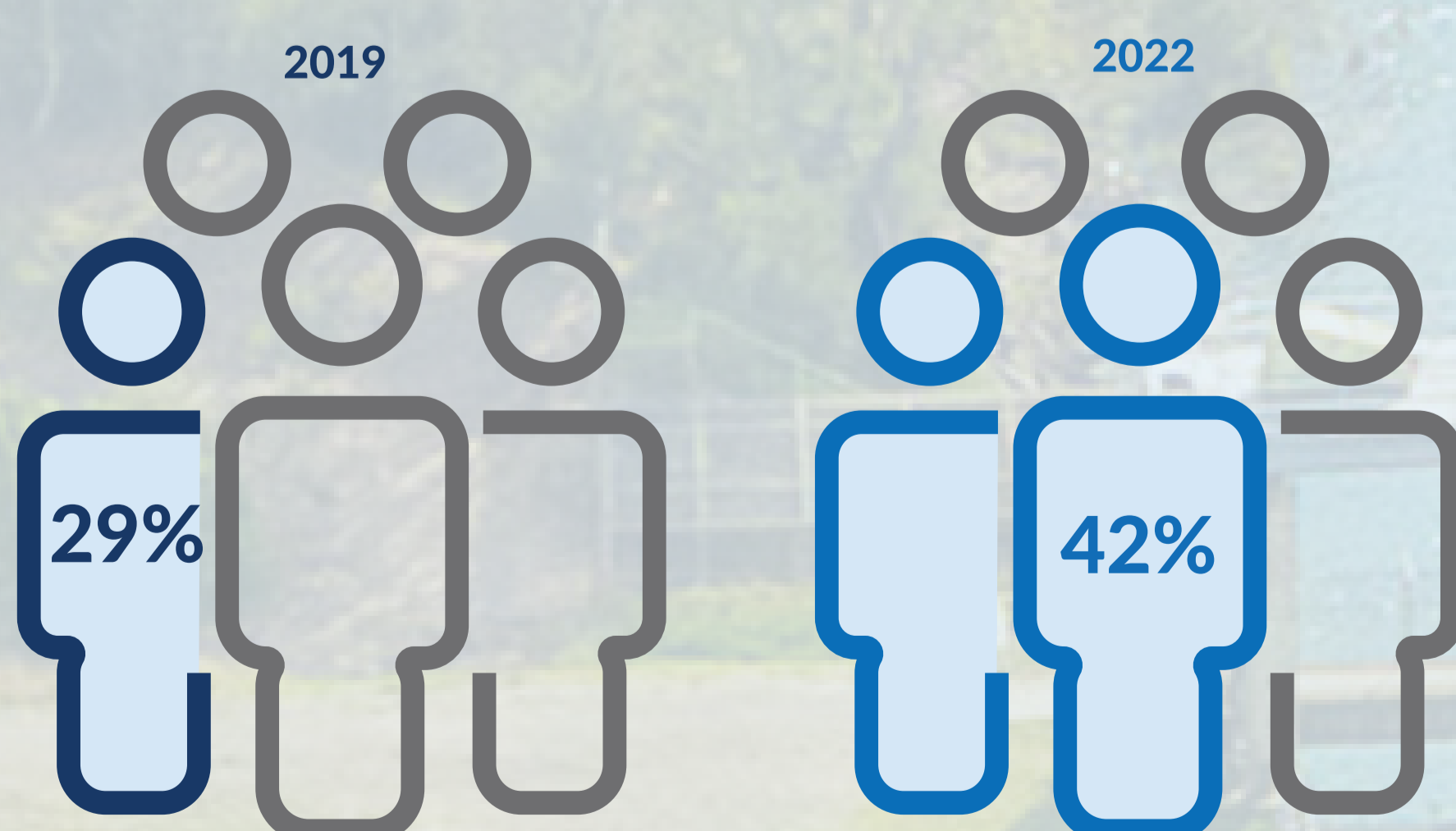


SHARING GEOSPATIAL INFORMATION

How is geospatial data being shared and published?

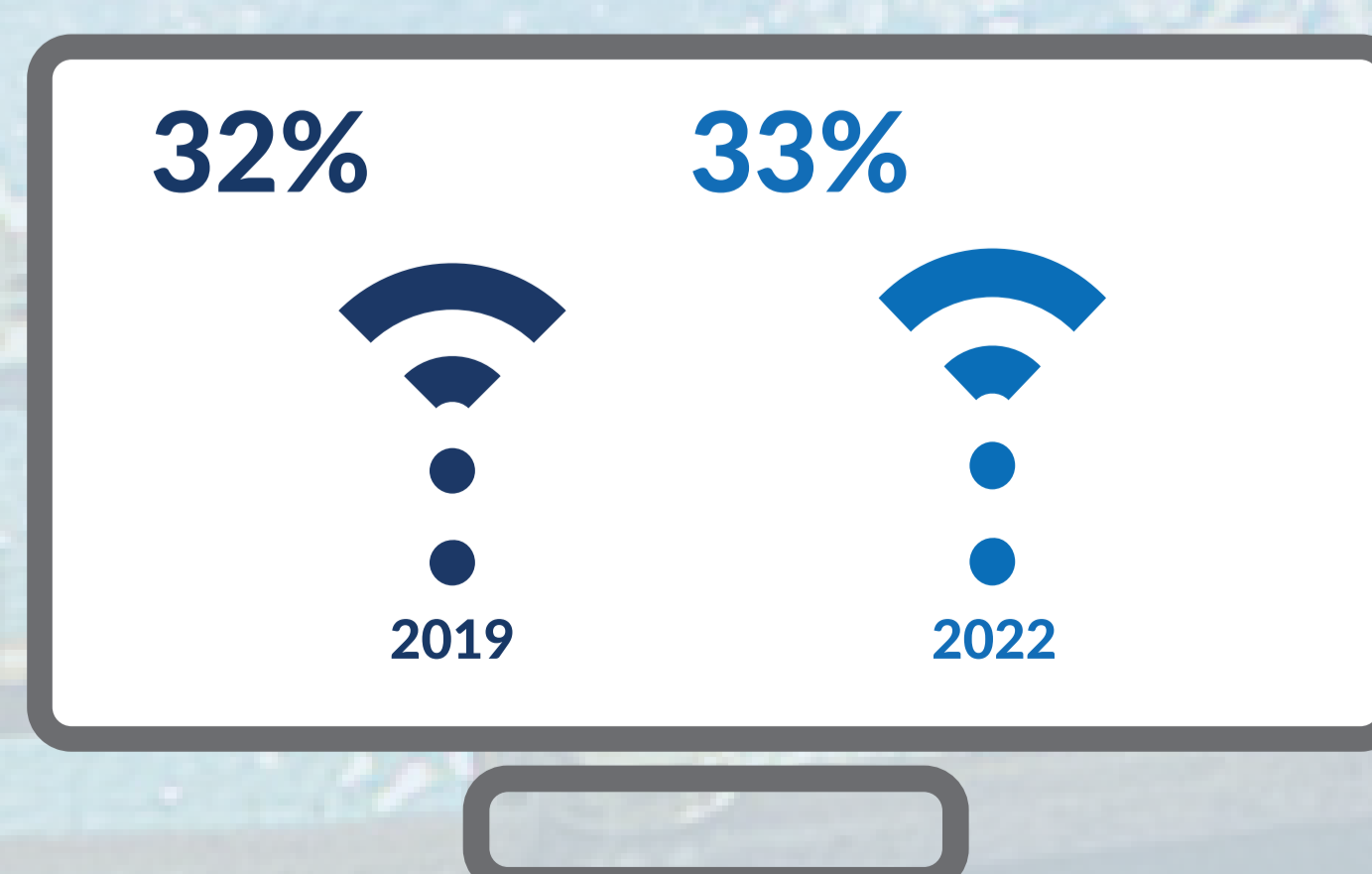
Public facing GIS application

Interactive service maps are becoming critical for customers and the community



Published open data

Around a third of authorities are providing, or are planning to provide data sharing options



Digital twin / 3D asset visualisations

More authorities have implemented a geospatial digital twin or 3D visualisations and they are a growing opportunity

