



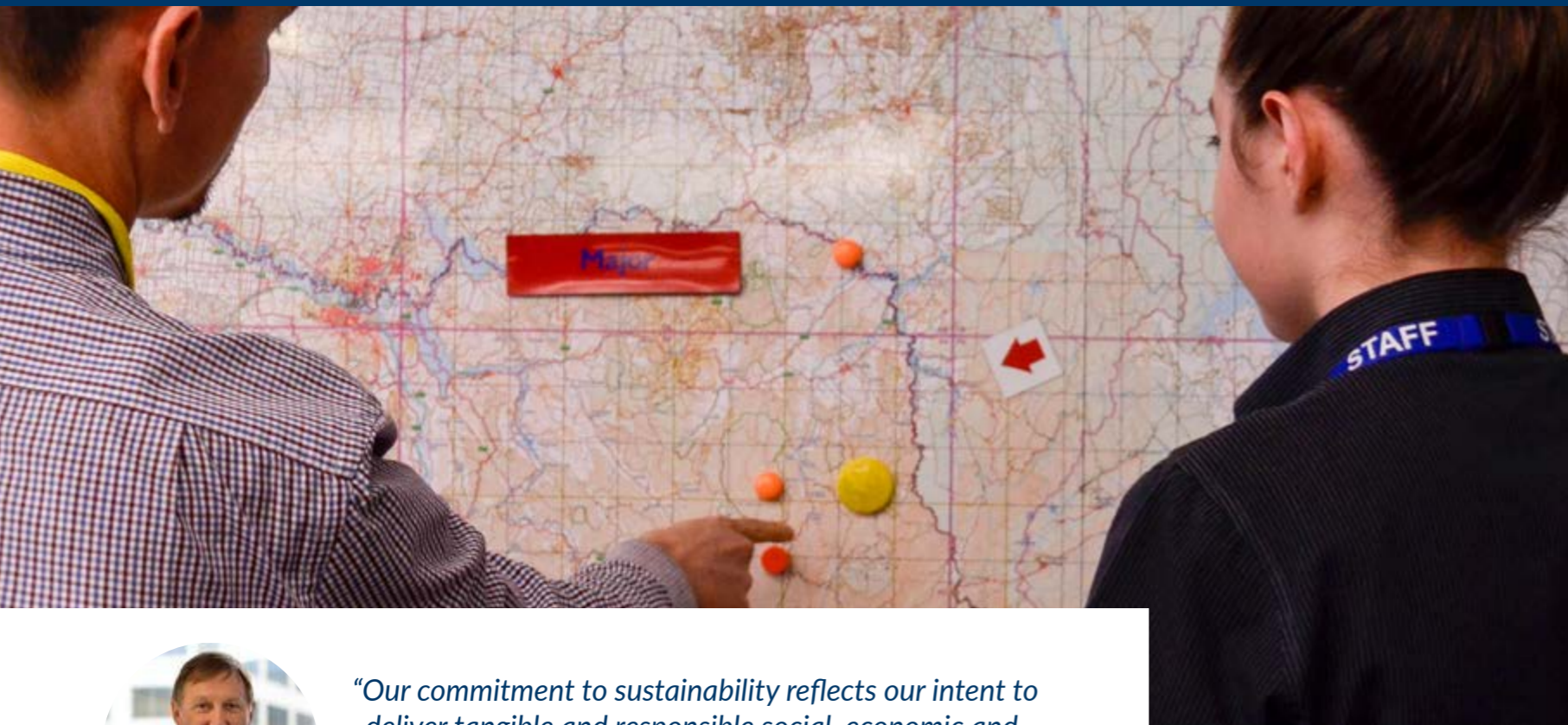
Committed to a
sustainable, equitable world

Level 8, 575 Bourke Street
Melbourne 3000 Australia

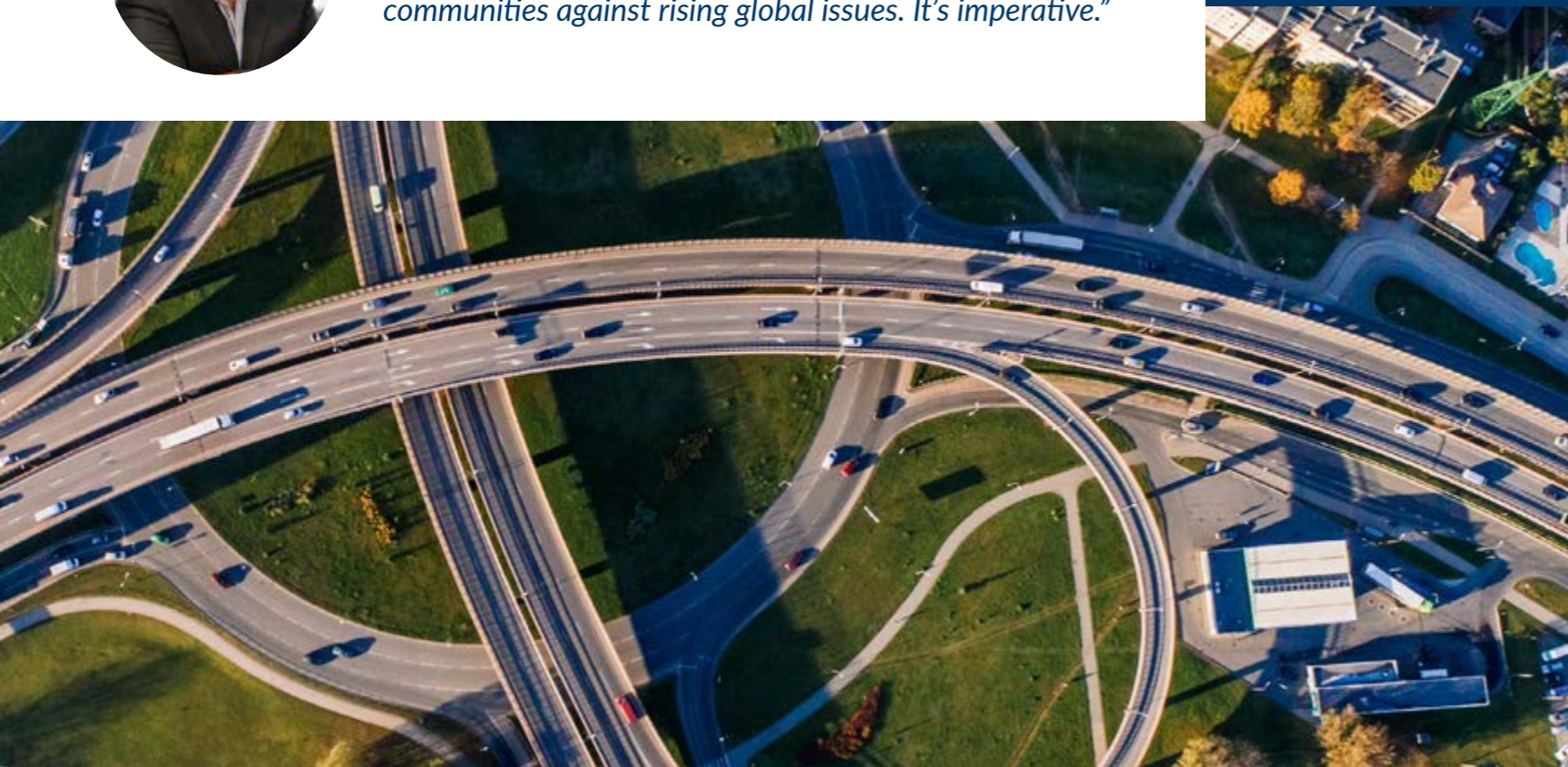
info@spatialvision.com.au
+61 3 9691 3000

spatialvision.com.au

Spatial
Vision 



“Our commitment to sustainability reflects our intent to deliver tangible and responsible social, economic and environmental outcomes that reinforce the future for our communities against rising global issues. It’s imperative.”



Welcome

A message from our Managing Director

Our livelihoods are being challenged in extraordinary ways. Now more than ever we need to work together to tackle and solve the increasingly complex issues that threaten our future.

This statement of purpose outlines how Spatial Vision is committed to a sustainable future, where our business makes a positive and meaningful contribution towards the achievement of a safe, inclusive and prosperous world.

We will achieve this via a number of means but it begins with our people. We have implemented health and well-being policies that ensure we provide a safe, happy and energised working environment for our staff.

We are committed to a social procurement policy that improves the diversity and scope of opportunity available to people from all walks of life, to join our business and the initiatives to which we contribute.

We are adopting and embedding an operational framework aimed at delivering meaningful outcomes against the United Nations 17 Global Sustainable Development Goals. This framework is designed to permeate throughout not only the management of our business, but our projects, the partnerships we establish and most importantly, the values we live and breathe every day.

Together, our sustainability commitment helps ensure we can deliver outcomes that make a lasting impact within our communities and our environments. Our children for generations to come, depend on it.

These are just a few of the ways we are making a difference but we have more work to do. We hope our commitment resonates and that you'll join us on our journey.

Glenn Cockerton
Managing Director

Our mission

Our mission is to empower governments and organisations with the tools, technology and expertise needed to address social, economic and environmental challenges.

We harness location and information technologies to unlock deeper, more meaningful and critical insights for our clients and the broader society.

Our commitment to a sustainable, equitable and thriving world, includes the following aspirations:



Supporting our emergency services

For over 15 years, Spatial Vision has provided Victoria's Emergency Services with the latest authoritative topographic mapping products.

Developed in partnership with the Victorian Department of Environment, Land, Water & Planning (DELWP) and Country Fire Authority (CFA), the Vicmap Book series began as an initiative to make topographic mapping more widely available throughout Victoria.

The book series, and now the digital Mapscape topographic basemap product, continue to support vital planning, decision making, and communications from head-office to those first responders in the field.

I Equality

We strive to create a diverse and inclusive business culture. We share varied ideas and philosophies and seek to maintain a productive, agile, fun and supportive work environment. We pursue partners and clients that share our values.

II Environment

Spatial Vision actively participates in a broad range of climate change-related initiatives, and we apply our experience and expertise in location information technologies and business system development to support sustainability both on land and below water.

III Innovation

We deliver industry leading, robust and adaptable solutions that harness the experience of our multi-disciplinary team and leverage the most appropriate information and technologies available. We promote and foster a culture that encourages knowledge sharing and personal development. We invest in research and development activities that ensure we can deliver world-leading solutions.

Committed to a sustainable, equitable world

Spatial Vision is committed to aligning our solutions, operations and partnerships with the United Nations 17 Global Sustainable Development Goals (SDGs). Our company is developing policy and standards to ensure our business delivers tangible and measurable outcomes that contribute to the achievement of goal targets.



Our services: data, technology, process and people



Spatial Services



Maps



Mobile Apps & IT



Strategic Consulting



Software, Data & Training



Our people

15 countries. Over 20 languages.

We are a multi-disciplinary team of cartographers, solution architects, industry consultants, app/web designers, software engineers, GIS analysts, data scientists and geeks, project managers, and visualisation and quality assurance specialists. Our team include some of the most experienced geospatial and IT technology practitioners anywhere.

- Teamwork**
Enable our collective success
- Responsibility**
Own the outcome
- Creativity**
Be pioneering
- Ethical**
Have integrity
- Passion**
Invest energy
- Client Focus**
Work in partnership

An inclusive, thriving culture

The passion and expertise we bring to our work is drawn from life experiences that span multiple cultures, ages, abilities, thoughts and perspectives. This rich diversity within our team keeps us fresh and enables us to delivery industry-leading solutions to our clients time and time again.

We celebrate our diversity and are always encouraging a more inclusive and equitable environment for people of all genders, ages and cultural backgrounds through everything we do.

Going beyond our workplace

Female representation in the spatial sector is only 25%.*

We take gender equality and participation seriously. We know that in order to achieve our own diversity and inclusion goals, we need to play a leading role in our industries to create more opportunities for women. We have built strong relationships with RMIT and the University of Melbourne to allow greater access to research and development, project collaboration, student mentoring and sponsorship opportunities.

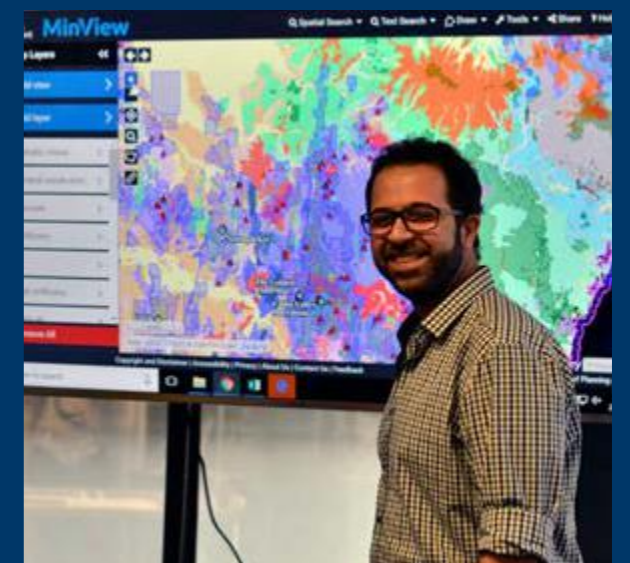
Additionally, in 2018 we established the annual Women in Geospatial Award to encourage female students to enrol in geospatial science at RMIT. This award comprises a cash prize to support the recipient's studies and a mentoring relationship with a member of our team.

* Diversity & Inclusion: Thinking differently about difference, Spatial and Surveying Diversity Leadership Network, April 2019

Keeping our people happy and healthy

Nothing is more important than keeping our people healthy and safe. We actively invest in initiatives that promote a healthy work-life balance and our people's health and wellbeing.

Current programs include pilates classes, mental health seminars, and an employee-led social program. All staff also have access to an Employee Assistance Program.



Improving health outcomes for communities

Each of us have a role to play in making gender equality a reality. Communities, corporations and governments in particular have a responsibility to educate, communicate and influence the change in policy needed to eliminate the gender divide.



"The Victorian Women's Health Atlas makes visible the differing experiences of women and men and provides an evidence base for planning and monitoring which will contribute to lasting improvements in women's health."

Rita Butera, Executive Director, Women's Health Victoria



CLIENT Women's Health Victoria

SOLUTION A user-friendly, interactive website visualising key statistics to illustrate gender impacts on priority health areas.

BENEFITS Translates volumes of static data into a dynamic display that can be easily interpreted; enables evidence-based decision making.

Not-for-profit organisations like Women's Health Victoria who advocate for system capacity and a gendered approach to health, are making a meaningful difference.

With the development of the Women's Health Atlas, Spatial Vision were able to assist Women's Health with consolidating accurate, current and disaggregated health data within a visualisation platform, that highlights gender bias and allows for monitoring and measuring change over time. The outcomes help to communicate and educate key stakeholders and inform improved service delivery and health outcomes for women.



"This is a really useful and valuable resource for our work promoting women's health priorities with stakeholders especially Local Government. I couldn't imagine delivering a training on gender without incorporating the Atlas"

Women's Health Service

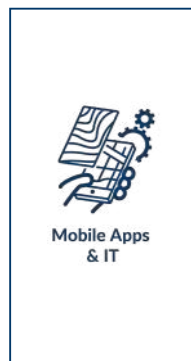
"It can be difficult to find evidence-based reliable data and information presented in a form that is easily understood, so this resource is really useful."

Respectful Relationships Education Worker

Securing the future of our fisheries and aquaculture industries

The oceans not only regulate the climate and the clean air we breathe, but provide a vital source of food our world relies on. Sustaining healthy marine and coastal biodiversity is necessary to manage the economic demands of our fisheries sector but fundamentally, the livelihood of more than 3 billion people who depend on it every day.

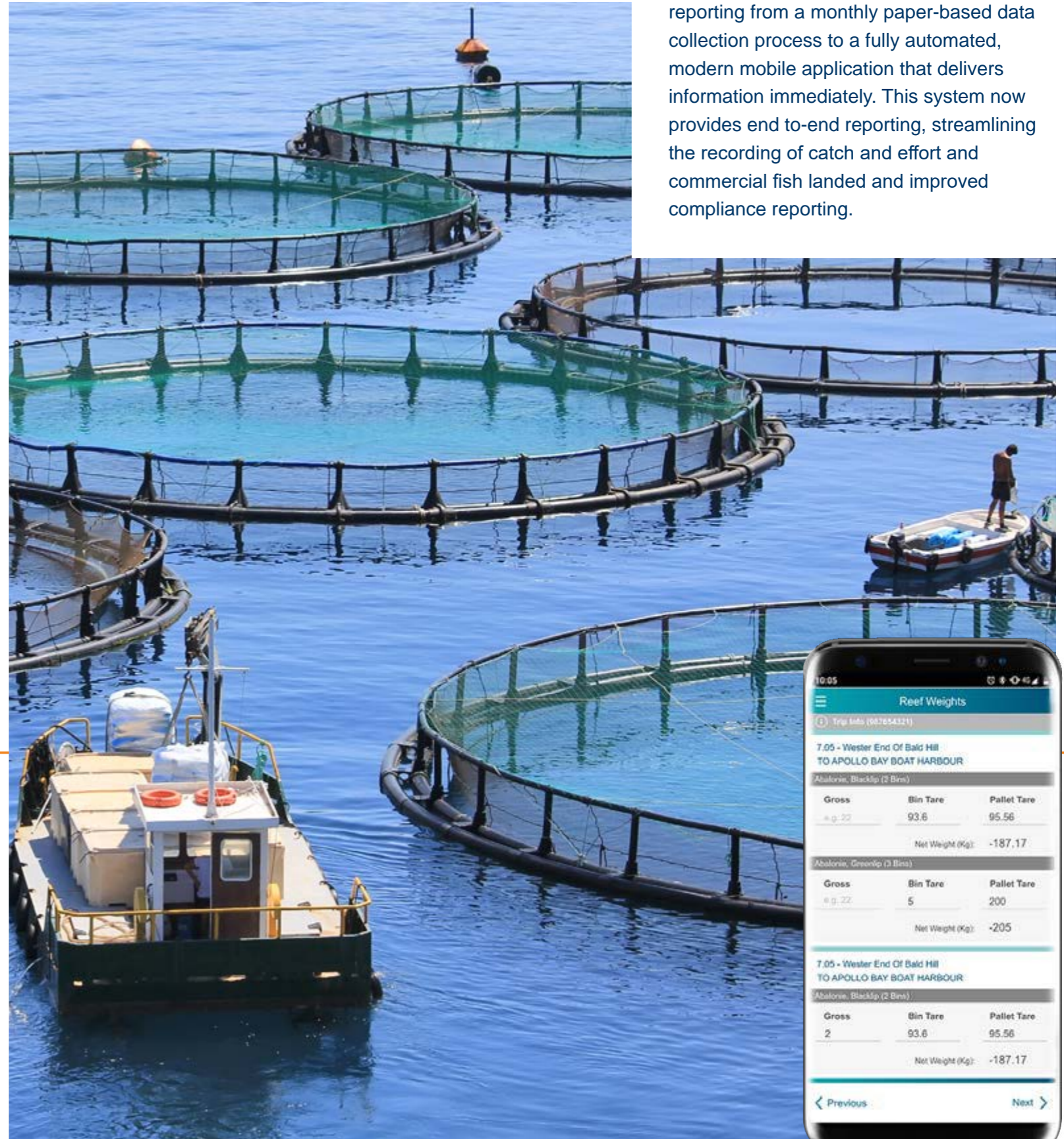
While the sector is projected to see continued growth with commercial, recreational fisheries and aquaculture contributing more than \$5B to the Australian economy, the industry faces considerable fiscal and operational barriers. Regulatory compliance, sea-level rise and warming, illegal fishing activities among other challenges, will continue to challenge the industry and its ability to embed sustainable practices within its supply chain.



CLIENT Victorian Fisheries Authority

SOLUTION A dynamic mobile reporting application supporting commercial fisheries in capturing data and reporting fishing activity.

BENEFITS End-to-end reporting capability streamlines the reporting process; improves data capture and accessibility; aids regulatory compliance.



For the Victorian Fisheries Authority (VFA), Spatial Vision developed the eCatch reporting mobile app that has transformed commercial fisheries catch and effort reporting from a monthly paper-based data collection process to a fully automated, modern mobile application that delivers information immediately. This system now provides end-to-end reporting, streamlining the recording of catch and effort and commercial fish landed and improved compliance reporting.

Reef Weights		
Trip Info (647654321)		
7.05 - Wester End Of Bald Hill TO APOLLO BAY BOAT HARBOUR		
Abalone, BlackSp (2 Bins)		
Gross	Bin Tare	Pallet Tare
49.22	93.6	95.56
Net Weight (Kg):		-187.17
Abalone, GreenSp (3 Bins)		
Gross	Bin Tare	Pallet Tare
49.22	5	200
Net Weight (Kg):		-205
7.05 - Wester End Of Bald Hill TO APOLLO BAY BOAT HARBOUR		
Abalone, BlackSp (2 Bins)		
Gross	Bin Tare	Pallet Tare
2	93.6	95.56
Net Weight (Kg):		-187.17



Climate Change poses a significant threat to the environment and the productivity of our primary industries including the Agriculture Sector, which is Australia's largest producer contributing more than \$14B in food and fibre exports.

With predicted changes in weather patterns, increased frequency of extreme weather events and constrained allocation of water will provide significant challenges to primary production, community well-being and environmental assets.

ENVIRONMENTAL CLIMATE EXPLORER

Assisting climate adaptation in the agriculture sector



In response, Spatial Vision in partnership with Natural Decisions, facilitated a co-design, collaborative approach with the North East Catchment Management Authority (NECMA), industry, government and community stakeholders to capture requirements, and to support development of the Embedding Climate Adaptation in Agriculture (ECAiA) platform.

These visualisation tools helped to raise awareness and support farm-scale analysis, planning and decision making that will inform adaptive pathways designed to mitigate the long-term implications of climate change.



CLIENT North East Catchment Management Authority

SOLUTION A set of interactive web-based tools illustrating the anticipated impacts of climate change over the next 30 years.

BENEFITS Assists the agricultural sector and local government to better understand and adapt to future impacts of climate change; supports strategic planning for councils and agricultural enterprises with regionally specific climatic data.

"Spatial Vision have been part of a multidisciplinary team that comprised of a range of skills to deliver a novel and innovative solution to identifying and communicating the modelled outlook for climate change in North East Victoria and how that might affect agricultural industry sectors, and local government."

Lachlan Campbell, Catchment Coordinator Regional Agricultural Landcare Facilitator, North East Catchment Management Authority



The road to a sustainable, equitable future

Our world is rapidly evolving. We are being confronted with new and escalating challenges. Livelihoods are threatened and our future is more uncertain.

Climate change, biodiversity destabilisation, digital transformation and cyber security, pandemics, political and economic instability are just the tip of the iceberg. How do we influence the sustainability of our communities, environments, and the primary industries upon which we rely?

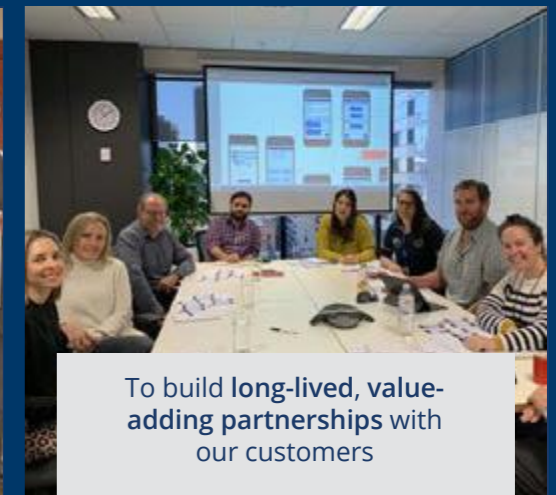
Our view is that communities will substantially benefit from the broader adoption of the UN Sustainable Development Goals to tackle some of these issues.

We also believe that, together, we need to champion the application of these goals across organisations and assist others who are looking for direction and guidance.

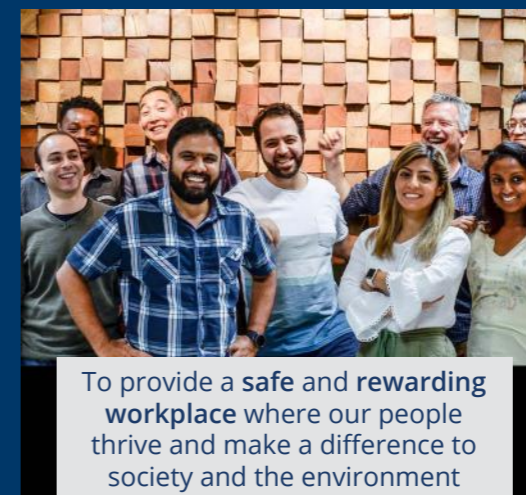
As our business continues to evolve, our future will be guided by the following ambitions:



To be recognised by clients as delivering authentic, reliable and intelligent solutions addressing real world challenges



To build long-lived, value-adding partnerships with our customers



To provide a safe and rewarding workplace where our people thrive and make a difference to society and the environment



To make a tangible contribution to the acknowledgement and achievement of the United Nations Sustainable Development Goals

Partnerships

Spatial Vision recognises the importance of forming and sustaining long-term partnerships with leaders in their chosen fields of expertise.

We continue to establish meaningful relationships with key Government, Research, Education and Private sector organisations. This enables delivery of innovative solutions to complex problems for clients, and contributes to the development and upskilling of the spatial, surveying sciences and IT industries.

FRONTIER S I >



Join us on the journey

Level 8, 575 Bourke Street
Melbourne 3000 Australia

info@spatialvision.com.au
+61 3 9691 3000

spatialvision.com.au



Spatial Vision operates a quality assurance system fully integrated with the company's Business Management System (BMS). Spatial Vision's BMS has been certified as compliant with the ISO 9001:2015 standard for the provision of geospatial systems, data and analysis services and products by Global-Mark Pty Ltd.